



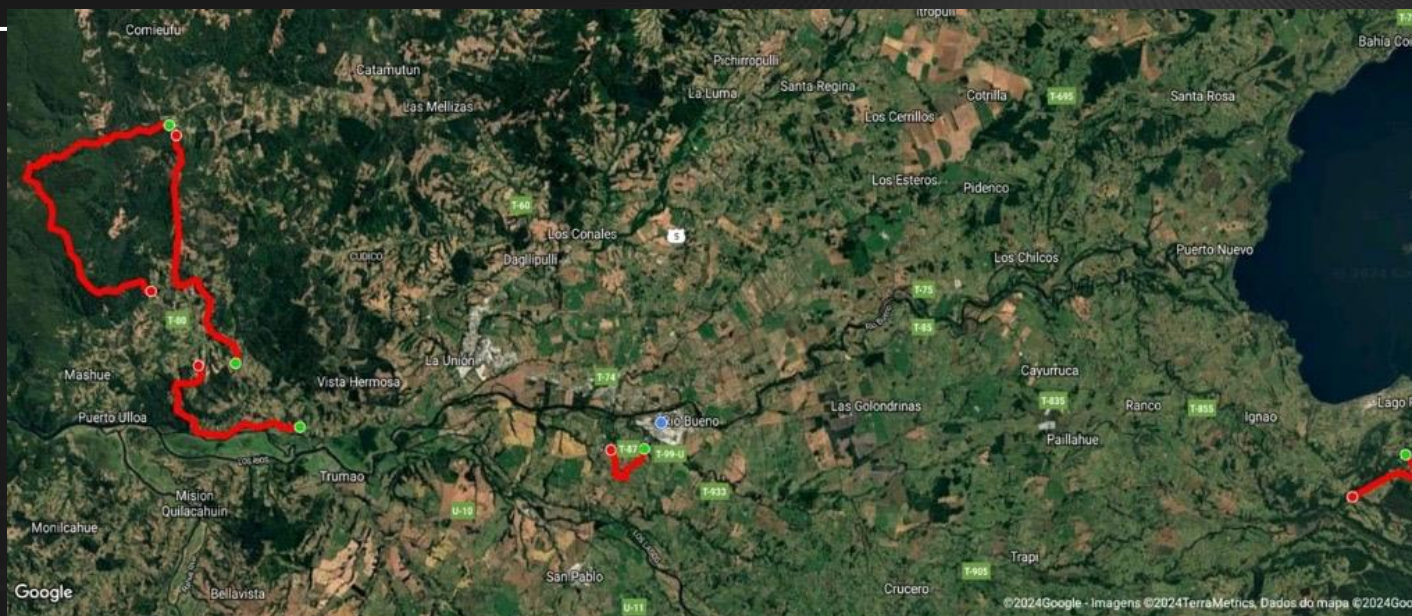
SPECIAL STAGES ANALYSIS



RALLY OVERVIEW

RALLY INFORMATION

DAYS	2
LEGS	4
LENGTH	278.29 km
# SS	9
SS LENGTH	113.45 km
LIASON	164.84 km



TYRES

SCORPION



K4
HARD

GRAVEL

SPECIAL STAGES INFORMATION

LONGEST LOOP DAY 1 • 2 – SATURDAY & SUNDAY – [56.60 km]

LONGEST STAGE SS 4 • 8 – LOS TRACTORES [21.77 km]

LOOPS & SECTIONS SEVERITY



SURFACE SORTING



GRAVEL *MEDIUM*



GRAVEL *SOFT*



GRAVEL *COMPACT*



TARMAC

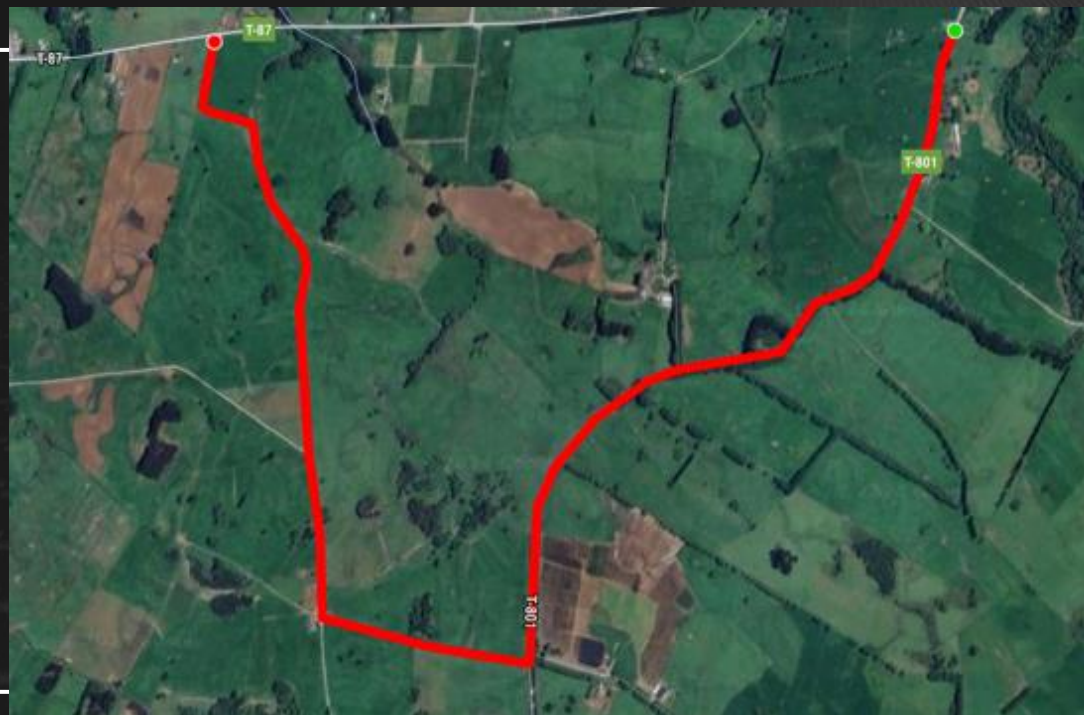
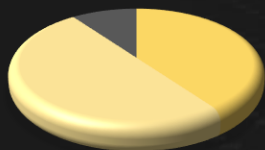
SS 1.5.9 • Rio Bueno

STAGE INFORMATION

LENGTH **4.25 km**

SURFACES

- SOFT GRAVEL **50%**
- MEDIUM GR **40%**
- TARMAC **10%**



RECCE INFO



15.10
12h30



CLEAR



AIR 17°C
GROUND 12°C

RECCE NOTES

- FAST
- WIDE AND VERY NARROW AT THE FINAL
- FLAT WITH BUMPS
- TECHNICAL MOST VISUAL

RATINGS



SECTION	SURFACE	PROFILE	WIDTH	LAYOUT
START – 0.4	TARMAC	FLAT	WIDE	FAST
0.4 – 2.1	MEDIUM GRAVEL	FLAT	WIDE	MID TO FAST
2.1 – STOP	GRAVEL SOFT	FLAT	VERY NARROW	MID SPEED

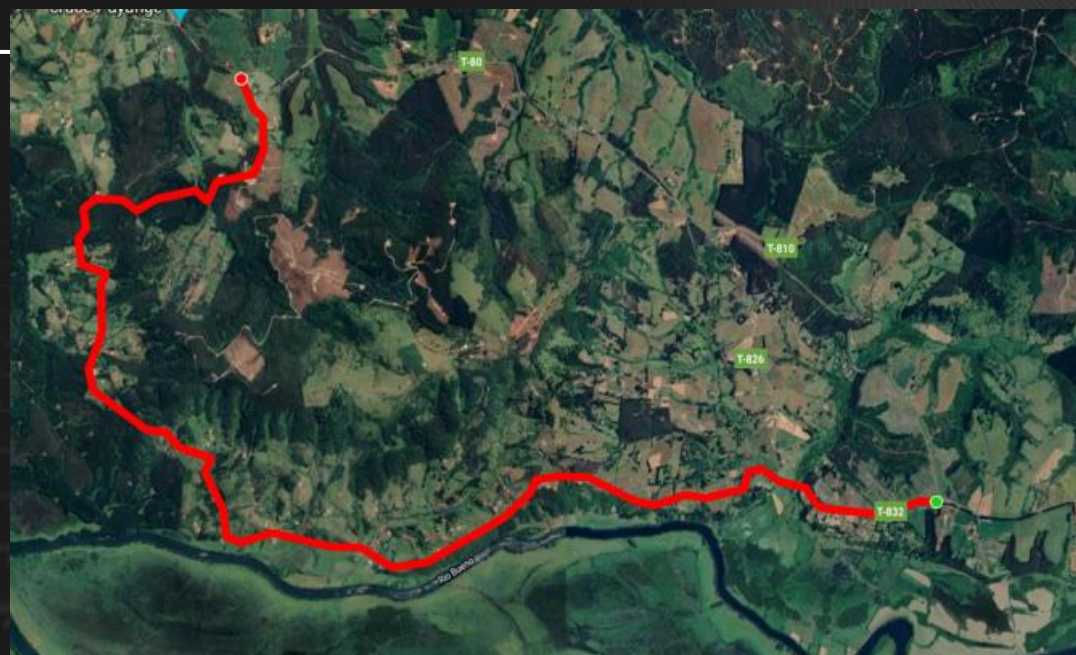
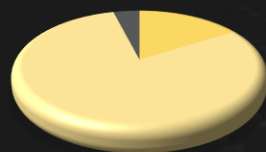
SS 2.6 • Yaquito

STAGE INFORMATION

LENGTH **12.24 km**

SURFACES

- SOFT GRAVEL **67%**
- COMPACT GR **26%**
- TARMAC **7%**



RECCE INFO



15.10
10h05



CLEAR



AIR 11°C
GROUND 9°C

RECCE NOTES

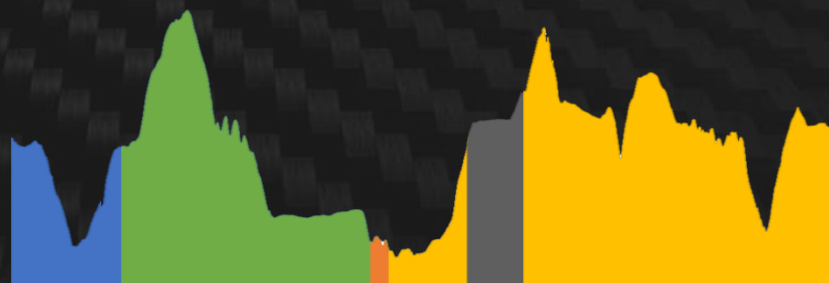
- MEDIUM TO FAST
- NARROW TO MEDIUM, NO SCAPE AREA
- LOTS OF UPS AND DOWNS
- SUPER TECHNICAL, NOT VISUAL

RATINGS

PUNCTURE RISK



STAGE RATE



SECTION	SURFACE	PROFILE	WIDTH	LAYOUT
START - 2	MEDIUM GRAVEL	UH+DH	NARROW	TECHNICAL
2 - 5.1	SOFT GRAVEL	DH	NARROW	TECHNICAL
5.1 - 5.3	TARMAC	FLAT	MEDIUM	TECHNICAL
5.3 - 7	SOFT GRAVEL	UH	MID - NARROW	TECHNICAL
7 - 7,3	TARMAC	UH	MEDIUM	TECHNICAL
7,3 - 12,6	SOFT GRAVEL	UH+DH	NARROW	TECHNICAL



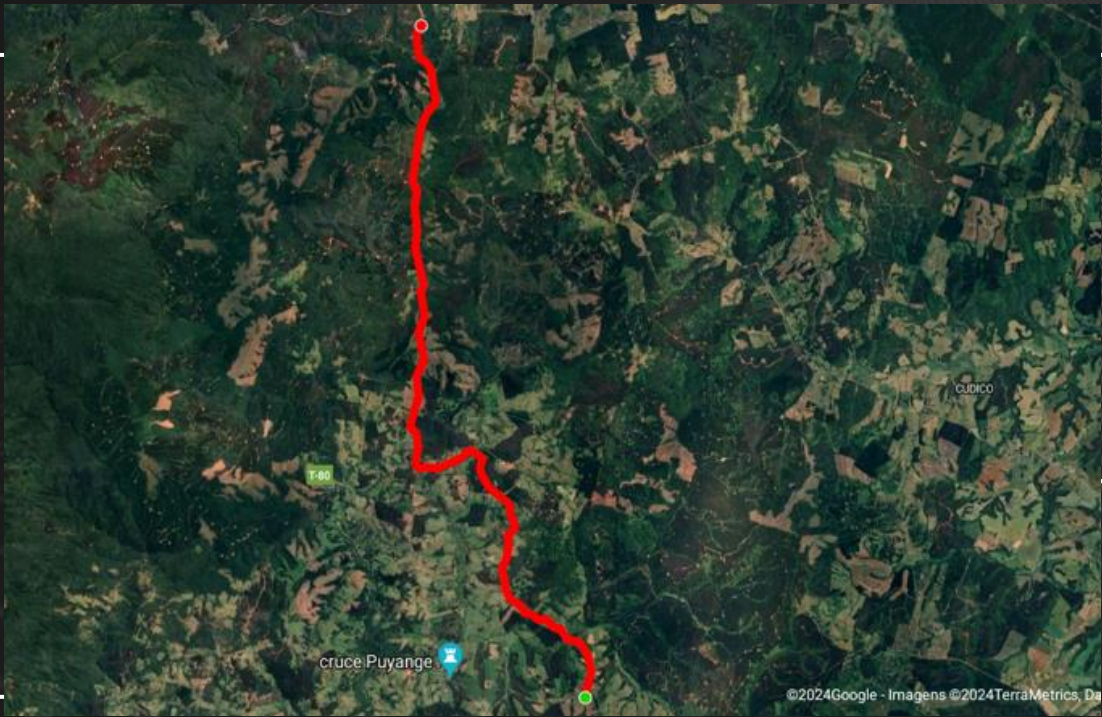
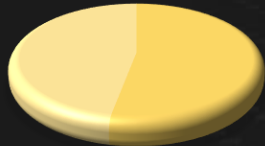
SS 3.7 • Puclaro

STAGE INFORMATION

LENGTH **16.34 km**

SURFACES

- SOFT GRAVEL **47%**
- MEDIUM GR **53%**



RECCE INFO



15.10
10h45



CLEAR



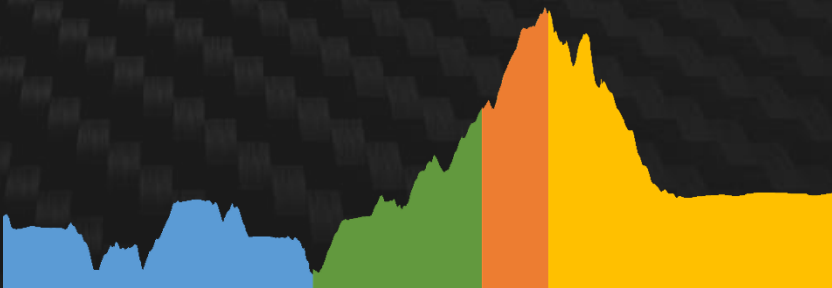
AIR 15°C
GROUND 10°C

RECCE NOTES

- FAST
- NARROW WITHOUT SCAPE AREA AND A LOT OF TREES
- LOTS OF UPS AND DOWNS
- SUPER TECHNICAL, NOT VISUAL

RATINGS

- PUNCTURE RISK
- TYRE WEAR
- GRIP LEVEL
- TYRE STRESS
- STAGE RATE



SECTION	SURFACE	PROFILE	WIDTH	LAYOUT
START – 5.8	SOFT GRAVEL	UH+DH	NARROW	TECHNICAL
5.8 – 10.2	MEDIUM GRAVEL	UH	NARROW	TECH + FAST
10.2 – 12	SOFT GRAVEL	UH	NARROW	TECH + FAST
12 – STOP	MEDIUM GRAVEL	DH	NARROW	TECH + FAST



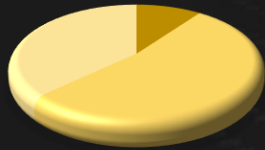
SS 4.8 • Los Tractores

STAGE INFORMATION

LENGTH **21.77 km**

SURFACEs

- SOFT GRAVEL **37%**
- MEDIUM GR **53%**
- COMPACT GR **10%**



RECCE INFO



15.10
11h15



CLEAR



AIR 13°C
GROUND 9°C

RECCE NOTES

- FIRST PART MEDIUM TO SLOW (WITH EROSION), SECOND PART FAST
- FIRST PART NARROW, SECOND PART WIDE WITHOUT SCAPE AREA
- BIG UPHILL AND DOWNHILL
- TECHNICAL, 80% NOT VISUAL

SECTION	SURFACE	PROFILE	WIDTH	LAYOUT
START – 6.9	MEDIUM GRAVEL	UH	NARROW	TECHNICAL
6.9 – 9.1	COMPACT GRAVEL	UH	WIDE	TECHNICAL
9.1 – 11.8	MEDIUM GRAVEL	UH	MID - NARROW	MED TO FAST
11.8 – 16.8	SOFT GRAVEL	DH+UH	MID - NARROW	FAST
16.8 – 18.7	MEDIUM GRAVEL	DH	MEDIUM	FAST
18.7 – STOP	SOFT GRAVEL	DH	MEDIUM	FAST

RATINGS

	1	2	3	4	5
PUNCTURE RISK			■■■■		
TYRE WEAR				■■■■	
GRIP LEVEL		■■■■			
TYRE STRESS				■■■■	
STAGE RATE	■■■■■				





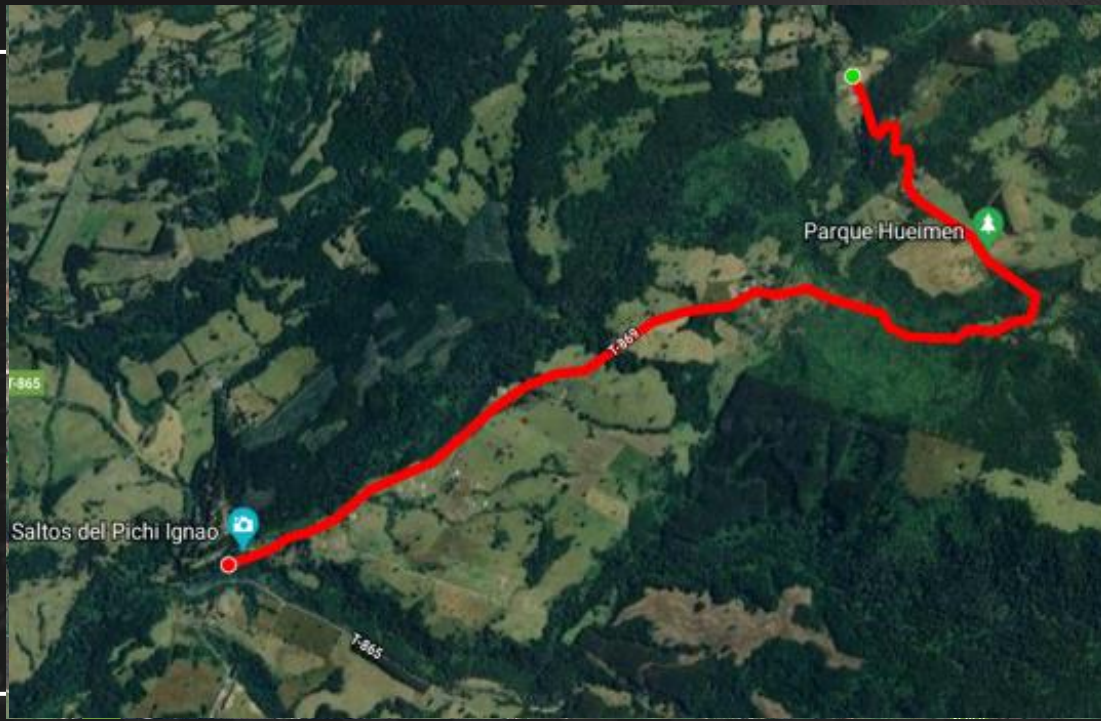
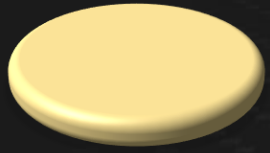
SHAKEDOWN • Hueimen

STAGE INFORMATION

LENGTH **5.80 km**

SURFACEs

 SOFT GRAVEL **100%**



RECCE INFO



15.10
15h35



CLEAR



AIR 17°C
GROUND 13°C

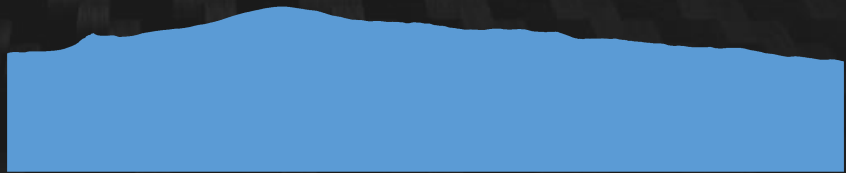
RECCE NOTES


- MEDIUM SPEED
- NARROW WITHOUT SCAPE AREA
- BIG UPHILL AND SMALL DOWNHILL
- TECHNICAL NOT VISUAL

RATINGS

	1	2	3	4	5
PUNCTURE RISK					
TYRE WEAR					
GRIP LEVEL					
TYRE STRESS					

STAGE RATE 



SECTION	SURFACE	PROFILE	WIDTH	LAYOUT
 START -STOP	SOFT GRAVEL	UH+DH	NARROW	TECHNICAL



PIRELLI