



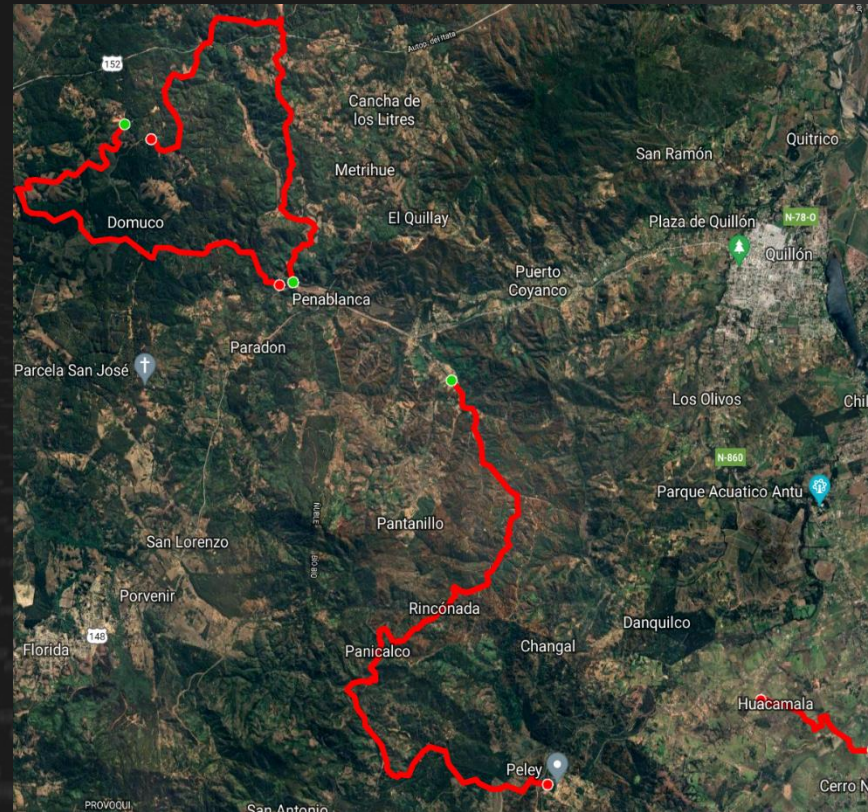
# SPECIAL STAGES ANALYSIS



# RALLY OVERVIEW

## RALLY INFORMATION

|           |           |
|-----------|-----------|
| DAYS      | 1         |
| LEGS      | 4         |
| LENGTH    | 213.06 km |
| # SS      | 7         |
| SS LENGTH | 96.56 km  |
| LIASON    | 116.50 km |



## TYRES

**SCORPION**



## SPECIAL STAGES INFORMATION

LONGEST LOOP DAY 1 • SUNDAY – [46.40 km]

LONGEST STAGE SS 3 • 6 – Panicalco [18.83 km]

# LOOPS & SECTIONS SEVERITY

## SUNDAY

---

LOOP 1



SECTIONs 1 • 2

SPECIAL STAGEs 1 • 2 • 3

LOOP 2



SECTIONs 1 • 2

SPECIAL STAGEs 4 • 5 • 6 • 7



# SURFACE SORTING



GRAVEL *MEDIUM*



GRAVEL *SOFT*



GRAVEL *COMPACT*

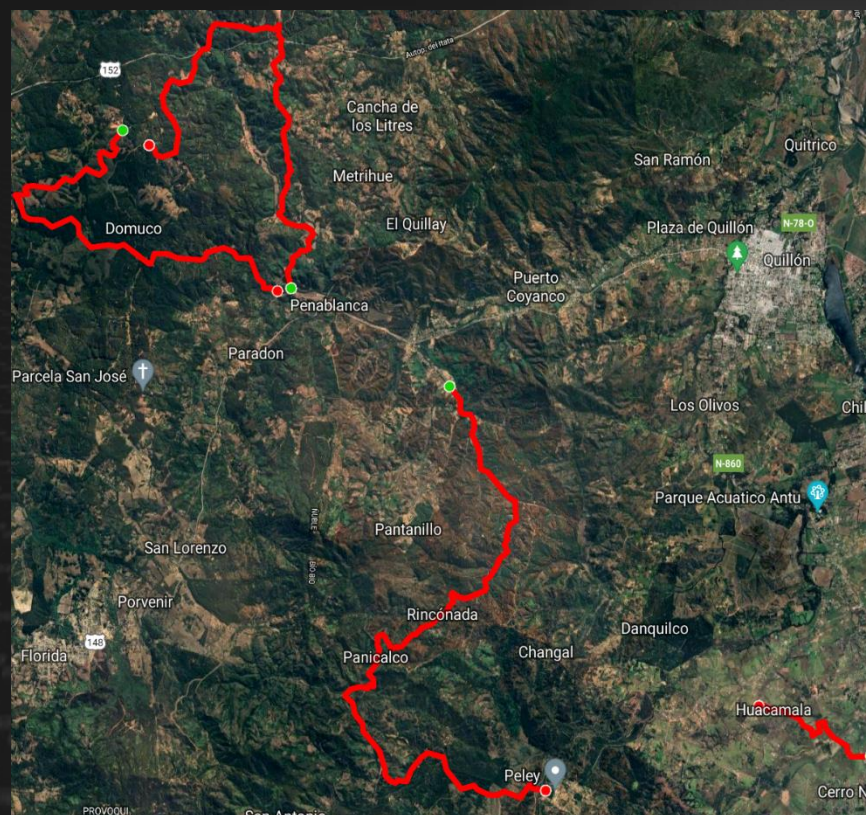


EARTH

# SUNDAY OVERVIEW

## DAY INFORMATION

|           |           |
|-----------|-----------|
| LOOPS     | 2         |
| LENGTH    | 213.06 km |
| # SS      | 7         |
| SS LENGTH | 96.56 km  |
| LIASON    | 116.50 km |



## RECCE NOTES

- MEDIUM TO FAST
- NARROW TO MEDIUM
- UPS AND DOWNS
- TECHNICAL, NOT VISUAL

## SPECIAL STAGES INFORMATION

|                |                                 |
|----------------|---------------------------------|
| LONGEST LOOP   | 1 <sup>st</sup> [46.40 km]      |
| LONGEST STAGE  | SS 3 • 6 – Panicalco [18.83 km] |
| CRITICAL STAGE | SS 3 • 6 – Panicalco [18.83 km] |

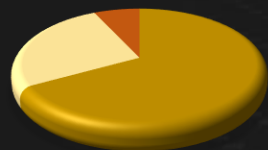
# SS 1.4 • Paredones

## STAGE INFORMATION

LENGTH **14.57 km**

### SURFACES

- SOFT GRAVEL **67%**
- COMPACT GR **26%**
- EARTH **7%**



## RECCE INFO



07.08  
10h25



CLEAR



AIR 13°C  
GROUND 8°C

## RECCE NOTES

- TECHNICAL, NOT VISUAL
- MEDIUM TO SLOW SPEED
- THREE FIRST PARTS NARROW
- LAST SECTOR MORE VISUAL AND MEDIUM SPEED

## RATINGS

PUNCTURE RISK



STAGE RATE



| SECTION     | SURFACE        | PROFILE | WIDTH        | LAYOUT    |
|-------------|----------------|---------|--------------|-----------|
| START – 8   | COMPACT GRAVEL | UH      | NARROW       | TECHNICAL |
| 8 – 9       | EARTH          | DH      | NARROW       | TECHNICAL |
| 9 – 10.7    | COMPACT GRAVEL | UH + DH | NARROW       | TECHNICAL |
| 10.7 – STOP | SOFT GRAVEL    | UH      | MID - NARROW | FAST      |



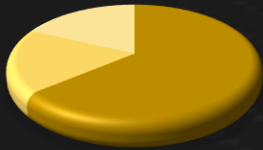
# SS 2.5 • Casablanca

## STAGE INFORMATION

LENGTH **13.00 km**

### SURFACEs

- SOFT GRAVEL 18%
- MEDIUM GR 18%
- COMPACT GR 64%



## RECCE INFO



07.08  
10h25



CLEAR



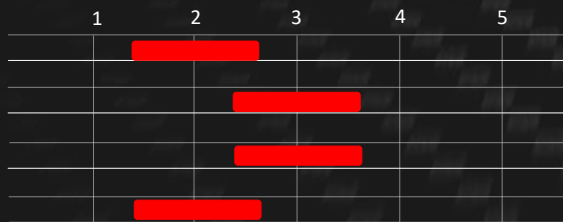
AIR 11°C  
GROUND 7°C

## RECCE NOTES

- SPEED MEDIUM TO FAST
- WIDTH MEDIUM
- UPS AND DOWNS
- MORE VISUAL

## RATINGS

PUNCTURE RISK  
TYRE WEAR  
GRIP LEVEL  
TYRE STRESS  
STAGE RATE



| SECTION     | SURFACE        | PROFILE | WIDTH  | LAYOUT      |
|-------------|----------------|---------|--------|-------------|
| START – 2.4 | SOFT GRAVEL    | DH      | MEDIUM | MID TO FAST |
| 2.4 – 4.8   | MEDIUM GRAVEL  | UH      | MEDIUM | MID TO FAST |
| 4.8 – STOP  | COMPACT GRAVEL | DH + UH | MEDIUM | MID SPEED   |



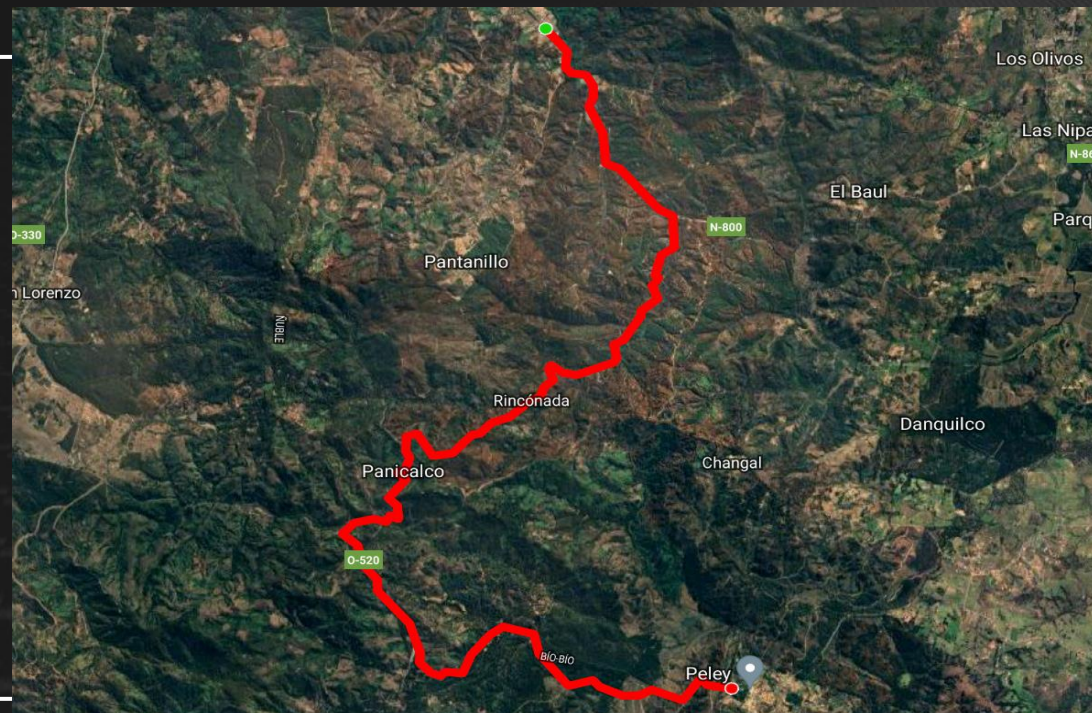
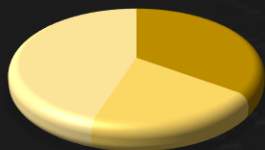
# SS 3.6 • Panicalco

## STAGE INFORMATION

LENGTH **18.83 km**

### SURFACES

- SOFT GRAVEL **45%**
- MEDIUM GR **20%**
- COMPACT GR **35%**



## RECCE INFO



07.08  
12h30



CLEAR



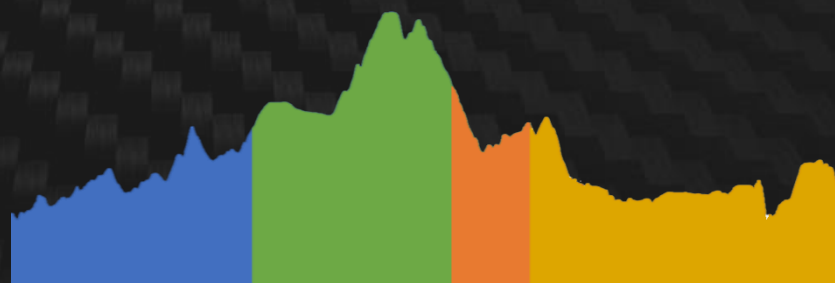
AIR 13°C  
GROUND 9°C

## RECCE NOTES

- FIRST SECTOR UPS AND DOWNS, NOT VISUAL
- SECOND SECTOR, TECHNICAL, NOT VISUAL
- LAST SECTOR MORE VISUAL, SPEED MEDIUM TO FAST

## RATINGS

|               | 1 | 2 | 3        | 4 | 5 |
|---------------|---|---|----------|---|---|
| PUNCTURE RISK |   |   | ████████ |   |   |
| TYRE WEAR     |   |   | ████████ |   |   |
| GRIP LEVEL    |   |   | ████████ |   |   |
| TYRE STRESS   |   |   | ████████ |   |   |
| STAGE RATE    | █ | █ | █        | █ | █ |



| SECTION     | SURFACE        | PROFILE | WIDTH        | LAYOUT      |
|-------------|----------------|---------|--------------|-------------|
| START – 6.8 | SOFT GRAVEL    | UH      | NARROW       | TECHNICAL   |
| 6.8 – 10.5  | MEDIUM GRAVEL  | UH      | NARROW       | TECHNICAL   |
| 10.5 – 12.1 | SOFT GRAVEL    | UH + DH | MID - NARROW | MED TO FAST |
| 12.1 – STOP | COMPACT GRAVEL | UH + DH | MID - NARROW | FAST        |



# SS 7 • SHAKEDOWN • Quillón

## STAGE INFORMATION

LENGTH **3.76 km**

### SURFACEs

 SOFT GRAVEL **33%**



## RECCE INFO



07.08  
14h10



CLEAR



AIR 13°C  
GROUND 9°C

## RECCE NOTES

- MOST VISUAL
- TECHNICAL AND FAST

| SECTION       | SURFACE     | PROFILE | WIDTH  | LAYOUT |
|---------------|-------------|---------|--------|--------|
| ■ START -STOP | SOFT GRAVEL | FLAT    | MEDIUM | FAST   |

## RATINGS

|               | 1 | 2 | 3 | 4 | 5 |
|---------------|---|---|---|---|---|
| PUNCTURE RISK |   |   |   |   |   |
| TYRE WEAR     |   |   |   |   |   |
| GRIP LEVEL    |   |   |   |   |   |
| TYRE STRESS   |   |   |   |   |   |
| STAGE RATE    |   |   |   |   |   |



**PIRELLI**